

Investor Update

2025



Presentations, demos and key conversations with 100's of customers, partners and prospects at Key Events:



CES2025



Edge AI Foundation

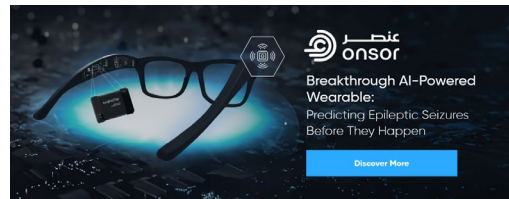


Embedded World

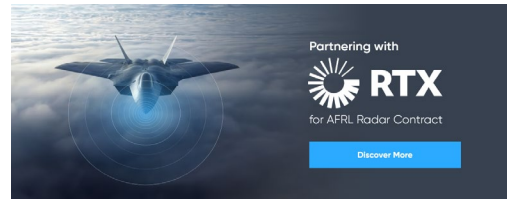


RISC-V Space Workshop

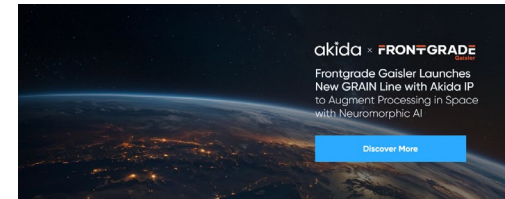
Announce products and solutions with key eco-system Partners in Akida Technology



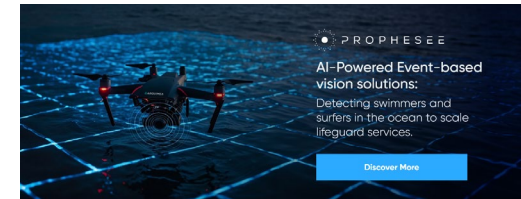
Onsor



RTX



FrontGrade Gaisler



Arquimea

Market Research

- Market: TAM, SAM, CAGR at the Edge with double digit growth
- Edge AI market is fragmented, focus on key use case targets
- GenAI is introducing new agentic use cases to the edge
- Market Research to identify Product- Market fit with potential for scaling

Strategy

- Enable on-device AI where Size Weight and Power (SWaP) challenges prevail
- Promote and Streamline Software Developers Journey
- Target use cases with large addressable markets with Akida low power differentiation
- Hire industry leading talent to develop next gen Akida IP to sustain competitive advantage
- Solve customer problems with combination of algorithms and efficient hardware execution

Execution

- Product Management to define products that meet minimum viable features in market window
- Product Engineering Teams perform Agile Sprint development efforts
- Features and Specifications that address assumptions, constraints, dependencies
- Create ML developer engagement experience with models to evaluate and achieve proof of concept delivery

Edge AI Market is being driven by key advantages:

Why **On-Device AI** Matters

Bringing AI on Device **Unlocks Various Benefits:**



Cost Effective
No unending cloud fees



Low Latency
Support real-time streaming data



Reliability
Keeps working, even without a network connection



Privacy
Your data stays on the device, not in the cloud

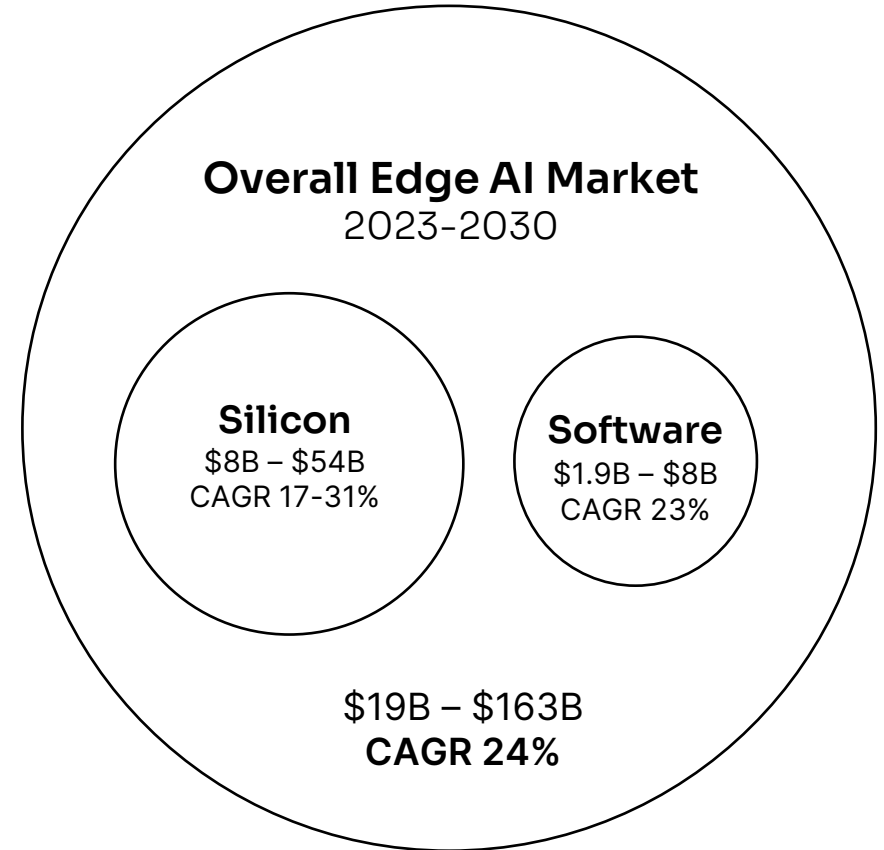


Security
No transmissions means less risk of interception

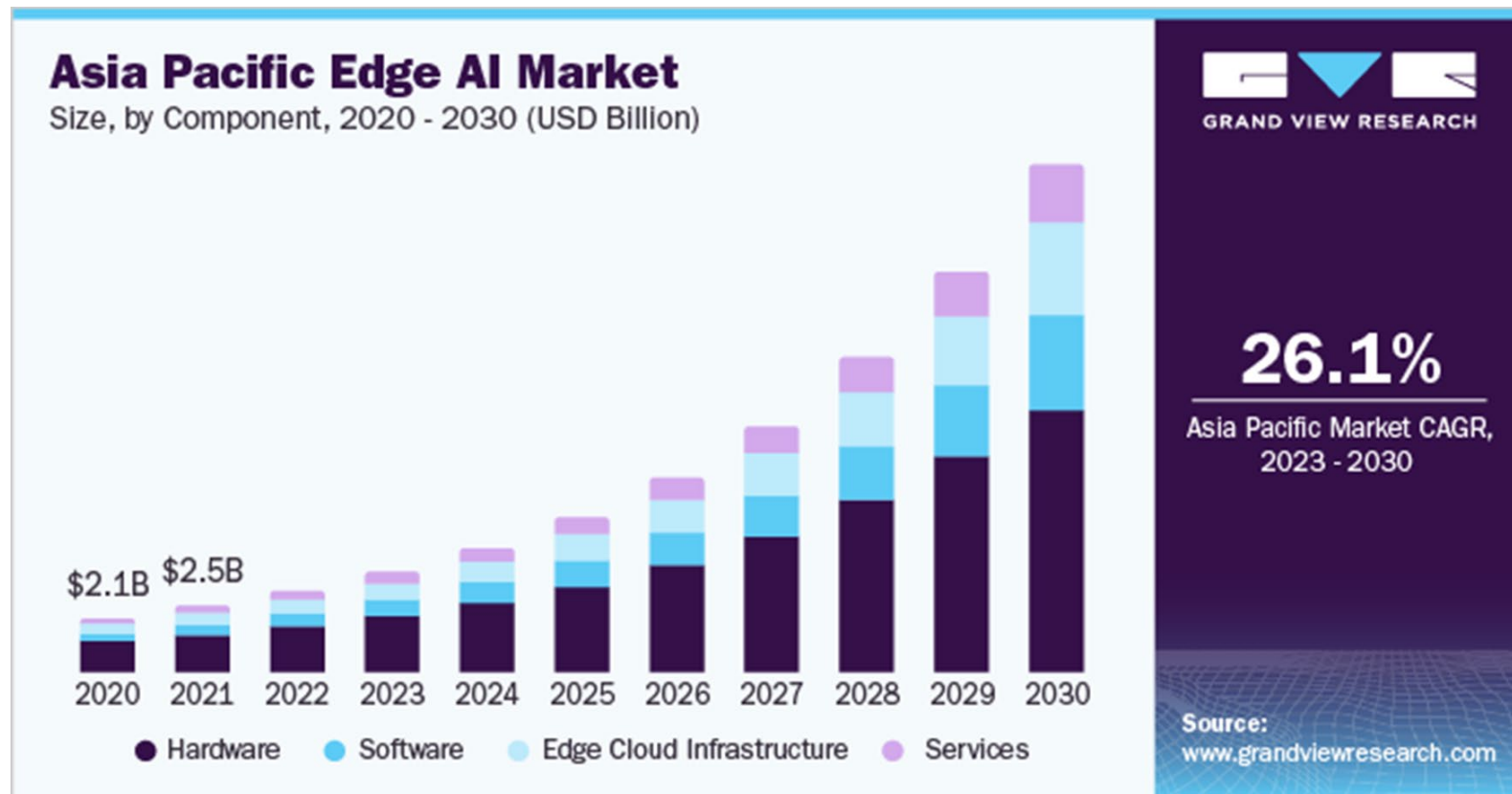


Personalized
Models can be tailored to your specific use case

- High cloud costs are driving edge AI conversion
- Low latency requirements makes edge mandatory
- Enterprises must keep data private and secure
- Need high reliability in connection challenged environments
- Desire customization in deployment with edge learning



Edge AI Market is just getting started:

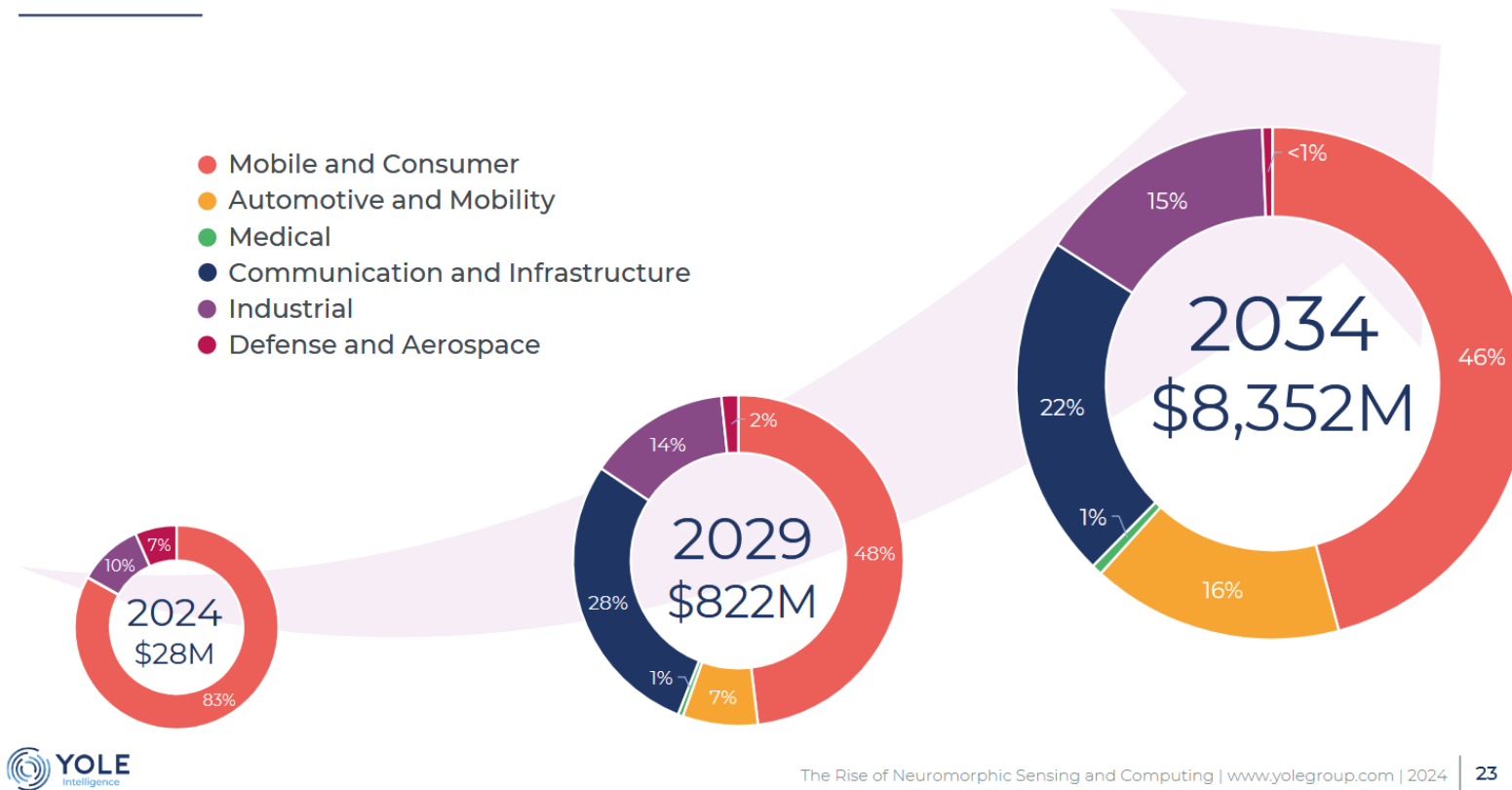


Neuromorphic computing is breaking out in **Edge AI**:

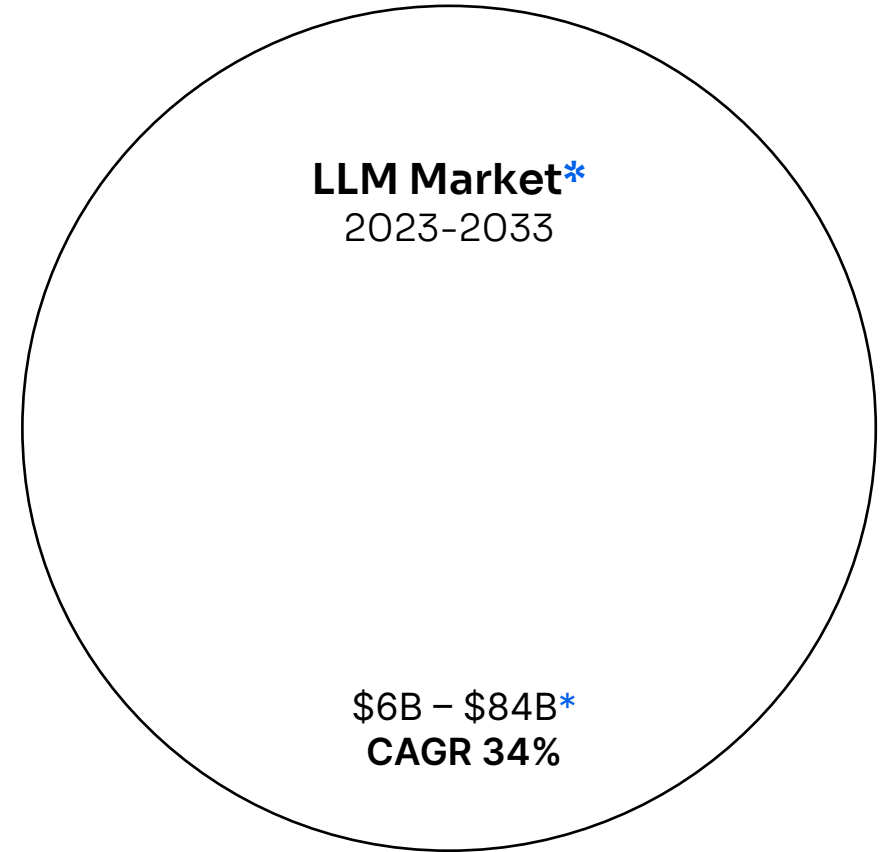
2024-2034 NEUROMORPHIC SENSING AND COMPUTING FORECAST



- Mobile and Consumer
- Automotive and Mobility
- Medical
- Communication and Infrastructure
- Industrial
- Defense and Aerospace

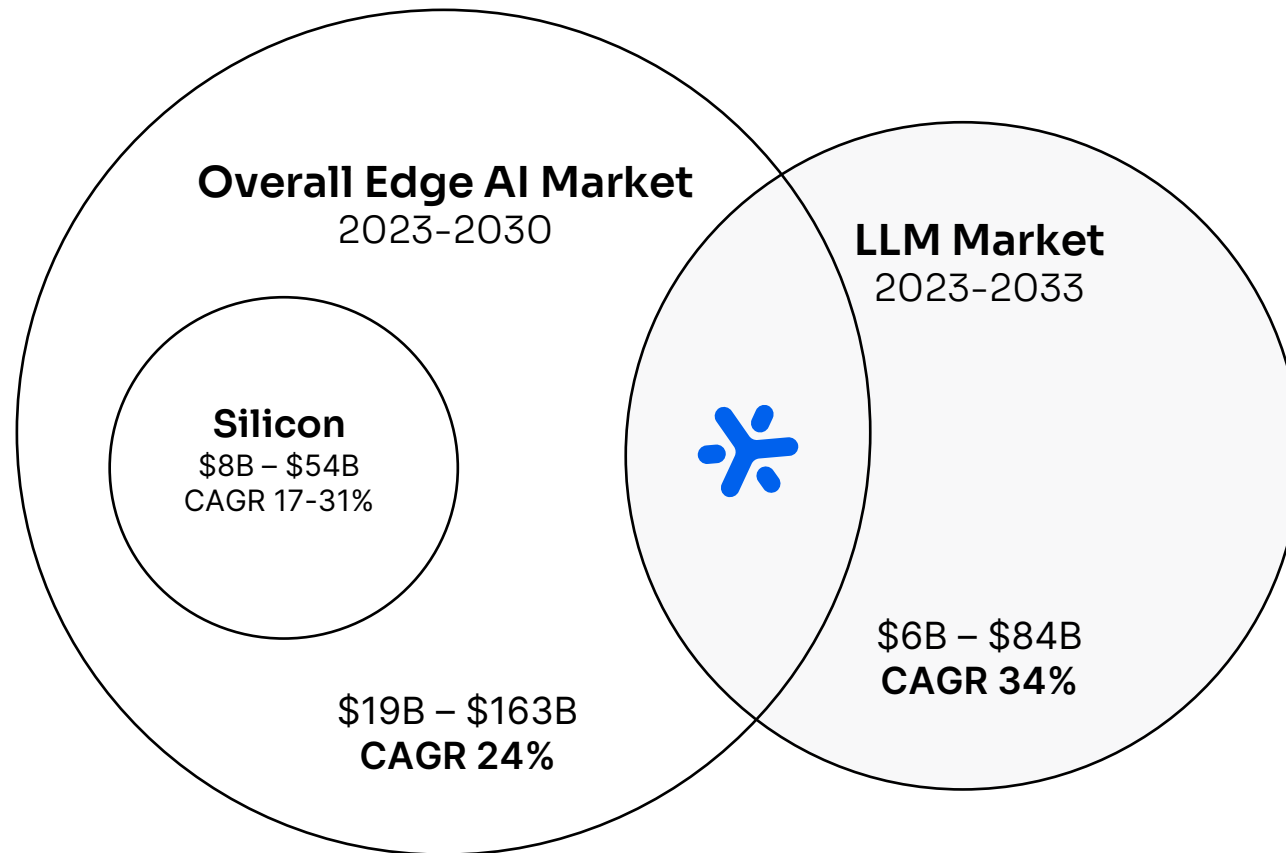


- ⊛ LLM market is cloud based but is expected to be deployed on the Edge in the future
- ⊛ Edge AI market drivers are also valid for LLMs
 - High cloud costs are driving edge AI conversion
 - Low latency requirements makes edge mandatory
 - Maintain enterprise data private and secure
 - High reliability in connection challenged environments
 - Customize models in deployment with edge learning
- ⊛ Combining classical edge AI with LLMs on the edge is expected to have explosive growth
- ⊛ Autonomy through edge AI combined with agentic LLM is expected to be deployed in mobility and robotic products at scale



* internal market estimate based on market research composite reports

- ⊛ **Unique Opportunities** combining sensing with understanding using LLMs at the Edge for highly accurate context aware interpretations



Our **Brain** Power



Sean Hehir
Chief Executive Officer



Steven Brightfield
Chief Marketing Officer



Tony Lewis
Chief Technology Officer



Ken Scarice
Chief Financial Officer



Jonathan Tapson
Chief Development Officer



Steve Thorne
Vice President of Sales



Todd Vierra
Vice President of Customer Engagement

Headcount 80+% Engineers

20% Advanced Degrees (PhD/MSc)

Strong Patent Portfolio

⌘ 54 Issued and Pending

Prior Industry Expertise



Customers



MegaChips



FRONTGRADE



RENESAS

Chelpis



AFRL
AIR FORCE RESEARCH LABORATORY

Partners

arm



EMOTION3D



intel
foundry



TEKSUN®
CULTIVATING TECHNOLOGY

ARQUIMEA



University Partnerships



Leading **On-Device** Streaming **Edge AI**

The Power of Neuromorphic Processing

- ⊗ Penetrating markets with high growth 20% CAGR
- ⊗ Competitive advantages in low power and integration
- ⊗ Flexible licensing model of IP, software and chip designs
- ⊗ Strong leadership team and culture
- ⊗ Closely working with partners to create eco-systems

Forward Looking **Statements**

Certain views expressed here contain information derived from third parties or publicly available sources that have not been independently verified. This presentation includes certain statements, projections and estimates of the anticipated future financial performance of **BrainChip Holdings Ltd.** and the size, growth and nature of future markets for the company's products. Such statements, projections and estimates reflect various assumptions made by the directors concerning anticipated results, which assumptions may or may not prove to be correct.

BrainChip Holdings Ltd. and its subsidiaries have not sought independent verification of information in this presentation. While the directors believe that they have reasonable grounds for each of the assumptions, statements, projections and estimates and all care has been taken in the preparation of this presentation, no warranty of representation, express or implied is given as to the accuracy, correctness, likelihood of achievement, or reasonableness of assumptions, estimates, statements and projections that are contained in this presentation. Such assumptions, estimates, statements and projections are intrinsically subject to significant uncertainties.

To the maximum extent allowed by law, none of **BrainChip Holdings Ltd.**, its directors, employees nor any other person accepts any liability arising out of any error, negligence or fault for any loss, without limitation, arising from the use of information contained in this presentation.



brainchipTM
Thank You

Invest In
brainchipTM 



Website

<https://investor.brainchip.com>



Contact Trevor Franz

Global Investment Relations Management

ir@brainchip.com

BrainChip Investor Relations

c/o Lancaster Grove Capital Pty Limited
Level 36 | 1 Macquarie Place | Sydney N
2000